

Ashmor

SMC/DMC/EPOXY - BUSBAR SUPPORTS/INSULATORS



Ashmor ELECTRICALS (INDIA) PVT. LTD.

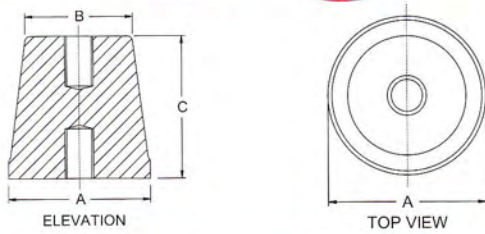
Works & Admin. Office

Block No. 1458, Across Mayur Wovens, Nr. Arvind International, Khatraj-Kalol Road, Moti Bhojan - 382 721,
Ta. Kalol, Dist. Gandhinagar, Gujarat, INDIA. Telefax : +91 (2764) 281061, 281062
Email : contact@ashmor.in, ashmor_electricals@yahoo.com Website : www.ashmor.in

Registered Office

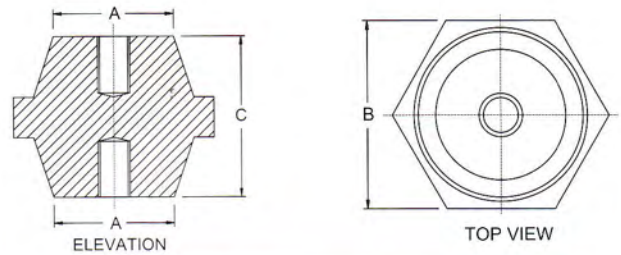
'Pushpak' Building, Opp. Cama Hotel, Khanpur, P.O. Box No. 152, Ahmedabad - 380 001, INDIA.
Phone : +91 79 25600889 Fax : +91 79 25601916

CONE TYPE



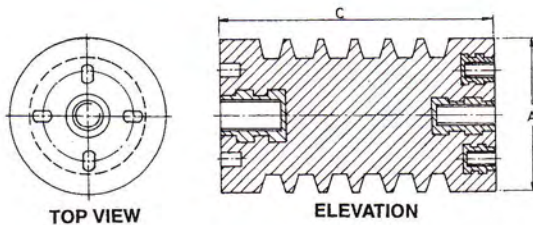
DIMN CAT NO.	A	B	C	INSERT SIZE
CN-01	30	25	30	M6 / M8
CN-02	33	30	30	M6 / M8
CN-03	40	30	40	M8 / M10
CN-04	40	33	40	M8 / M10
CN-05	50	40	50	M8 / M10 / M12
CN-06	50	40	60	M10 / M12
CN-07	50	40	70	M10 / M12

BARREL / HEXAGONAL TYPE



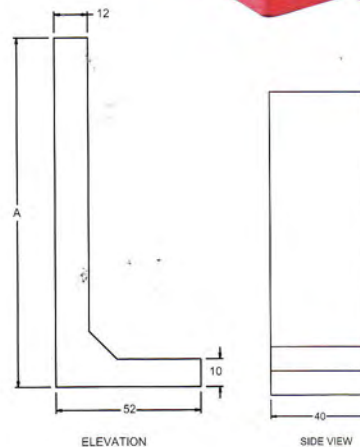
DIMN CAT NO.	A	B	C	INSERT SIZE
HX-01	25	25	25	M6 / M8
HX-02	35	35	35	M6 / M8
HX-03	30	40	40	M8 / M10
HX-04	36	46	50	M10 / M12
HX-05	38	49	60	M10 / M12

FINS TYPE



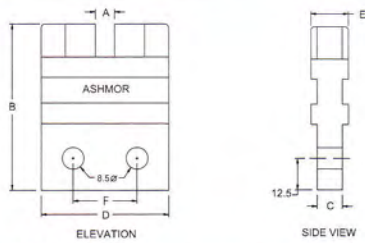
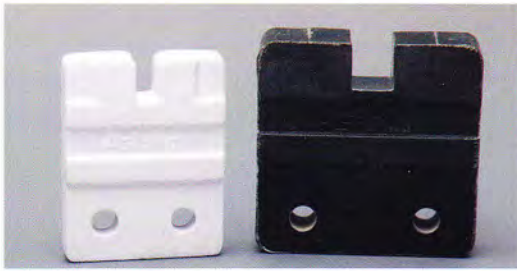
DIMN CAT NO.	A	C
HV-01	60	75
HV-02	60	90
HV-03	60	130
HV-04	77	130
HV-05	95	80

L - TYPE



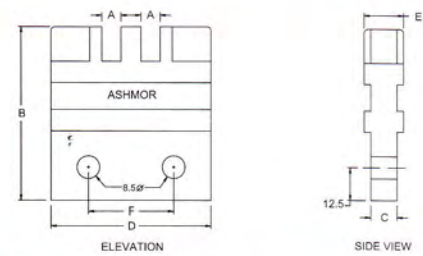
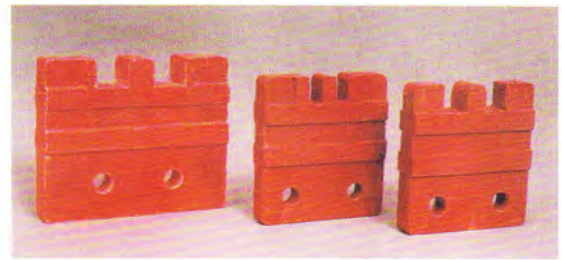
DIMN CAT NO.	A
L-01	60
L-02	85
L-03	125

SINGLE SLOT TYPE



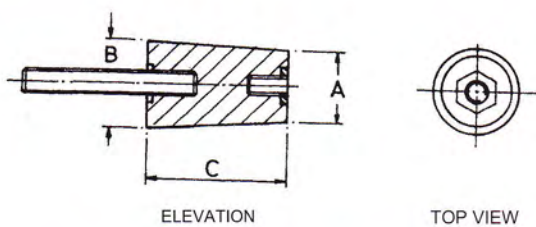
DIMN CAT NO.	A	B	C	D	E	F
SL-01	7.2	65	10	50	15	25
SL-02	10.5	65	10	50	15	25
SL-03	13.5	65	10	50	15	25
SL-04	7.2	70	16	70	20	40
SL-05	10.5	70	16	70	20	40
SL-06	13.5	70	16	70	20	40

DOUBLE SLOT TYPE



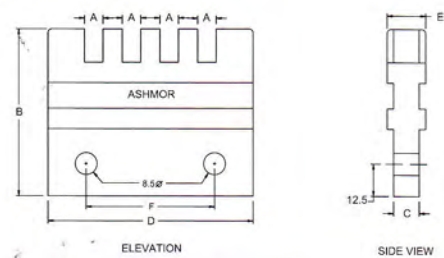
DIMN CAT NO.	A	B	C	D	E	F
DS-01	7.2	65	10	60	15	32
DS-02	10.5	65	10	60	15	32
DS-03	7.2	70	16	70	20	40
DS-04	10.5	70	16	70	20	40
DS-05	13.5	70	16	70	20	40

STUD TYPE



DIMN CAT NO.	A	B	C	INSERT SIZE
ST-01	29	30	19	M6
ST-02	29	30	25	M6
ST-03	27	29	33	M6
ST-04	29	30	93	M6

THREE / FOUR SLOT TYPE



DIMN CAT NO.	A	B	C	D	E	F
TS-01	7.2	70	12	80	16	50
TS-02	10.5	70	12	80	16	50
FS-01	7.2	70	12	80	16	50

Note:

- All Inserts are of Brass, Brass Inserts are used to avoid corrosion. Please specify if M.S. inserts required.
- Busbar Supports / Insulators are casted from DMC/ SMC/ Resin which are characterized by High Heat Resistance, Mechanical & Electrical Properties.
- Busbar Supports/ Insulators are Type Tested at Govt. Approved Test lab for Electrical & Mechanical Tests.
- Strict Quality Control for Raw Material as well as finished product of each Batch Manufactured is ensured.
- DMC is manufactured in-house to ensure consistency in quality.
- We are regularly coming out with new Designs. We shall be most interested in developing any special design to suit your requirement.
- We also welcome enquiries for SMC/DMC/ Epoxy Moulding for any application.

Please specify, for any special requirements :

- Height of the Insulator - Creepage Distance - Insert Size - System Voltage ± General Dimensional Sketch



**CUSTOM MADE BUSBARS AND CONNECTIONS ENCAPSULATED
IN HIGH GRADE EPOXY INSULATION.
FOR SERVICE VOLTAGES UP TO 33 kV.**

